

# WHITE MANTA

Banda Sea | Sangalaki | Raja Ampat | Triton Bay | Halmahera |

## Facilities

- ✦ En-suite cabins: 14
- ✦ Full stainless steel Kitchen
- ✦ All indoor air-con
- ✦ Saloon with 52" Plasma TV, DVD and media server
- ✦ Large indoor & outdoor dining areas
- ✦ Sundeck with shaded area
- ✦ Large & spacious Dive Deck
- ✦ Dedicated Camera Room
- ✦ 24-hour satellite WIFI

## Electrical Current & Plugs

220 volts but we have 110v adapters available. Sockets are 3 pin British Standard and 2 pin Thai standard,

## Specifications

- ✦ Length: 46m
- ✦ Beam: 10m
- ✦ Hull: Steel
- ✦ Engines: 2 x 450hp Cummins
- ✦ Cruise Speed: 10 Knots
- ✦ Genset: 3 x Cummins Gensets
- ✦ Fuel Tank: 45,000 Litres
- ✦ Water Maker: 20 Ton freshwater daily
- ✦ Fresh Water Tank; 30,000 Litres

## Safety Equipment

- ✦ Furuno Radar, GPS plotter, sounder, SSB radio, VHF radio, SART, EPIRB
- ✦ Standard fire fighting equipment
- ✦ Smoke & Fire alarms in all cabins
- ✦ 3 x 30pax life rafts,
- ✦ life jackets in every cabin
- ✦ 4 x chase boats
- ✦ First Aid & Oxygen Kit
- ✦ Satellite Telephone & wifi
- ✦ Night Watch security

## Dive Equipment

- ✦ Compressors 3 x 250 litres
- ✦ Nitrox system
- ✦ Diving tanks yoke & Din
- ✦ Nitrox clean air filter system
- ✦ Rental equipment full set available.



**An experience of a lifetime awaits you onboard the magnificent White Manta. Stable, spacious and safe, the White Manta is fully equipped to take you on a fascinating diving adventure in some of the best diving destinations in the S.E.A region.**

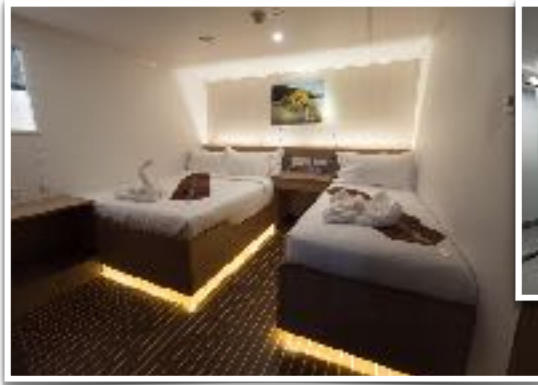
The White Manta is possibly the largest purpose-built REANA class dive vessel in the region. Measuring 46m (152 ft) by 10m (33ft), this steel hull vessel is spacious and comfortable. The 14 beautifully furnished en-suite cabins, each averaging 20sqm (200sqft) in size, an open outdoor alfresco dining area, and an indoor air-conditioned room for finer dining, speaks of the perfect onboard ambiance of a world class dive holiday.

Enjoy camera friendly facilities, including a dedicated camera room, delicious food, a huge, spacious dive deck, a beautiful sundeck and 24 hour satellite WIFI connection anytime, anywhere.

With maximum comfort and safety in mind, the White Manta is well equipped with safety facilities, cruises at 10 knots and the steel hull makes her an ideal vessel for long haul cruises able to reach the most remote & exotic diving destinations. Built for sea-worthiness the New White Manta operates on twin engines and is dependable for comfort, convenience and a stress-free dive holiday. The New White Manta is a world class cruising hotel.



## White Manta



### Cuisine & Lounging

Delectable dining should be one of the most important criteria when choosing a liveaboard. On the White Manta you can start your day with freshly baked breads. With no less than 5 meals a day, you will be filled and satisfied with an extensive range of treats for your taste buds.

Further snacks, tea and coffee, hot chocolate and drinking water are available all day. Our large refrigerator is amply stocked with chilled drinks. Special dietary requests can be catered for with prior notice.

Guests can choose to dine in air conditioned comfort in the indoor dining area which can accommodate up to 28 pax, or enjoy the magnificent meals Al-fresco in our outdoor dining area.

Our air conditioned saloon is a perfect place to chill out and watch a movie, read a book or magazine, or simply discuss your last amazing dive with your buddies.

White Manta is a true photographers dream. A dedicated indoor camera room with plenty of room to set up your DSLR cameras, strobes, lenses, extra battery packs, a charging area and storage space is available those with laptops, cameras, torches or DPV's.

Our sundeck, partially shaded, tops off the space at your disposal. It is a perfect place to catch a tan, enjoy a relaxing massage, or take a short nap.

### White Manta Accommodation

Up to 24 guests are easily accommodated in 14 double & twin share en-suites cabins. All cabins are priced per person and are based on 2 persons sharing a cabin. Comfortable, roomy and beautifully designed each cabin provides a home away from home even in the most exotic of locations. For those who prefer to travel alone single Occupancy is also available (See schedules/prices for details) Please Note; Single Occupancy on White Manta trips limited to Main & Lower deck cabins only, subject to availability.

#### New White Manta Cabin Lavout & Descriptions

Vessel Dimensions; 45m x 10m.



Cabins; 14 Deluxe Air conditioned En-suite hotel style suites.

Upper Deck **C1, C2, C3, C4, C5, C6**; Deluxe En-Suite (combined double / twin) cabins; 1 Queen & 1 single bed

Main deck; **C7, C8**; Deluxe En-Suite (Twin Share) cabins; 2 Super single beds

Main Deck; **C9, C10** Deluxe En-Suite (Twin Share) Note; 3 x single beds within for triple share upon request ONLY.

Lower deck; **C11, C12**, Deluxe En-Suite (Twin Share) cabins; 2 Super single beds

Lower Deck; **C13, C14** Deluxe En-Suite (combined double / twin) cabins; 1 Queen & 1 single bed





## White Manta

The incredible diving adventures you will enjoy with White Manta are all the more special as we take great pride in offering you the best in dining options with sumptuous meals and snacks throughout the day. Our Thai head chef is regarded as one of the best in the region, preparing delicious meals, snacks & treats throughout the day, you will never go hungry onboard White Manta!



The White Manta visits some of the most exotic, beautiful and remote diving destinations in South East Asia. No matter on which of our paradise destinations you join us, after each dive you will feel at home, with plenty of space to relax, in our thoughtfully designed cabins and communal areas; with 24hr satellite internet available you can also easily stay in touch with friends and family at home; let them know just how much of a wonderful time you are having!

# WHITE MANTA DESIGNED BY DIVERS FOR DIVERS.



**White Manta** is owned, operated and staffed by scuba divers. Therefore we understand the needs and expectations of divers better than any. White Manta is designed for both the comfort and flexibility of recreational divers. Our expansive dive deck and professional organisation enables divers to assemble and disassemble their equipment in comfort and ease. Divers enter the water via one of our four chase boats, ensuring the best underwater experience at exactly the right spot. Warm towels, hot drinks and fresh fruits are available after every dive



Furthermore we have a wealth of experience catering to the needs of all nationalities as well as non divers, children and the disabled. Our crew have operated in many diving environments in an increasing number of dive destinations.

Our Captain, boat and dive crew have years of experience in many of South East Asia's best diving destinations including Indonesia, Thailand and Malaysia.

Our professional dive team will give you experienced guidance above and below the water. Diving is conducted in small groups of similar experience, cert level and objectives.

Our dive deck is spacious & comfortable, a wide outdoor work table is perfect for underwater digital cameras.

We carry a full complement of equipment onboard, our SCUBA cylinders are available in yoke & Din fittings, we also have larger tanks available for those requiring a little extra air (pre-booking highly recommended)

We have four support RIBs; (2 x fibre glass with tank holders & 2 rubber dinghy) which are deployed constantly during your dives, so you can be assured of surface cover and safety support during your dive, even in the most adventurous of currents.

White Manta is well stocked with quality Scuba Equipment. We proudly maintain and service all of our equipment frequently. Scuba pro Regulators are the benchmark of simplicity and reliability; Scubapro BCDs combine this with comfort and durability.

Equipment Rental	Price in USD
Full Set Items marked*	50
BCD* (Sizes XXS-XL)	15
Regulator Set*	15
Wetsuit* (3mm Shorty XXS-XXL)	10
Fins* (full foot)	10
Mask*	10
Dive Computer*	15
Dive Torch**	15
Large Tank	15
Weights & Weight belt	FOC
Surface Marker Buoy	FOC

- ✦ Full set Rental price (USD/50/day) ONLY if paid in advance of the trip, else individual rates apply per diving day.
- ✦ Prices above are per day, except Torch\*\* rental priced per night/sunset dive.
- ✦ As a safety precaution Dive Computers are mandatory for each individual diver.
- ✦ Individual regulator parts: 2nd stages, SPG, LPI are NOT available for rent. If guests require they must rent full regulator set.
- ✦ Wetsuits - we have very limited supplies of full wetsuits. Where needed we recommend you provide your self to avoid disappointment
- ✦ Important: Please advise equipment requirements in advance and give sizes when booking, if you are unsure give us the following information and we will work it out for you
- ✦ Height (m) Weight (kg) Shoe Size (Euro)
- ✦ All equipment subject to availability..





## Our Crew

Our highly trained and attentive boat crew are dedicated to providing exceptional service whilst always maintaining the highest safety standards.

Half of the boat crew are certified SCUBA divers and therefore share a passion for the underwater world, understand the needs of our guests and offer intuitive support and safety to our divers on every trip.

Our captain is one of the most gifted and experienced Diving Boat captains in all of Asia.

Our 20 crew members comprise:  
2 Captains / Deck Officers, 3 Engineer, 2 Chefs, 2 Hostesses and 1 Maid & Masseuse. 4 Dinghy Drivers / Deck hands complete the team whom fill the tanks, drive the chase boats and blend the enriched air (certified blenders), 5 Dive guides, 1 Cruise Leader (instructor).

In support we have two drivers, an office manager, secretary and a managing and technical director working behind the scenes.

Our Boat and Dive Crew are gifted and trained in service excellence and it is customary to reward them at the end of the trip.

They deliver a very high level of service, safety and professionalism tempered with lots of fun to give you a holiday of a lifetime.

Many of our guests use 5-10% of the cruise price as a tipping guideline. Tipping is voluntary and most appreciated!



# PADI Courses

Everyone is welcome on board, no matter what level your certification. We educate divers from first contact to be proficient, environmentally sensitive, safe divers who respect not only their own but the safety of those around them, whilst ensuring contact with all marine life is passive and respectful.

We can offer PADI courses Advanced Open Water & Enriched Air Nitrox onboard

PADI Courses	Price in USD
Advanced Open Water	400
Enriched Air Diver	220

Course availability & pricing subject to availability, & selected trips ONLY. please contact us for details BEFORE your trip. All Course prices in addition to trip price. Prices are inclusive of instruction, PADI Materials and certification.

### Enriched Air Nitrox (EANX)

- ♦ Enriched Air Nitrox Fills and courses are available on board to enhance diver safety.
- ♦ We recommend the use of Enriched Air for all multi day repetitive dive trips.
- ♦ Enriched Air Nitrox course inclusive of 2 x EANX Nitrox Tanks
- ♦ Nitrox available for certified EANX divers & Students ONLY (Charges Apply)

## FAQs & Other info

### Medical Assistance

Our Management team is available 24 hours a day via our satellite communications to expedite emergency evacuation plans to the nearest recompression chamber and/or modern hospital depending on location. An extensive first aid kit and plenty of emergency oxygen are always available. Our dive staff and boat crew are trained in Primary & Secondary care and are DAN O2 providers. Please bring any of your own medications that you may need. Ensure you are in good condition for diving- prevention is always better than the cure. We insist all divers dive safely and within recreational limits. Our Cruise Leader reserves the right to suspend diving activities for any diver deemed unsafe. Dive & Travel insurance is compulsory for all White Manta cruises. Please ensure DAN or any other dive insurance is active and up to date.

### Communications

Network Coverage for Mobile phones and internet use is available although limited.

24hr Satellite wifi is available throughout your trip

An onboard phone is available for last minute transfer updates & emergencies: White Manta Cruise Leader Number: **+62 821 977 86577**

### Non Divers

Non divers are welcome onboard any of our cruises, each destination has plenty to enjoy topside, with fantastic snorkelling in each location.

Non divers pay 90% of trip price

### Child policy

Children, Infants and Babies are all most welcome on board.

Infant below 3yrs; USD50/ night, sharing with two parents/ guardian

Above 3yrs; USD200per night

From 10-12 Years of age; 50% of trip price

From 13 years of age; Non Diver rate applies

Diving Child; Normal trip price applies

If extra supervision/babysitting services required costs provided on request.

### Single supplement

For those who are travelling alone & would prefer their own cabin we offer a very reasonable single occupancy surcharge (20% in addition to trip price). Single occupancy allocation limited to main & lower deck cabins only, subject to availability.

### Payment on board

We prefer Indonesian Rupiah however we can accept USD, Singapore Dollar or Euros. If you wish to make onboard payments in another currency please check with us in advance of departure. Please ensure ALL bills are in good order; New, **NOT** worn or torn and unmarked or they will NOT be accepted. Exchange rates will be determined at the time of payment and will differ for USD100/50 bills and USD20/10 bills. Credit card payments onboard can be accepted with a 4.5% merchant fee added.

### Dive Times & Rebreather divers

Total dive time is 1 hour including a mandatory safety stop. Occasionally we may be able to accommodate divers wishing to dive for longer; however, prior approval should be sought and will be at the discretion of the Cruise Director.

Rebreather divers are welcome onboard however we ask you provide your own sofnolime, booster, fitting hose to decan tank. Our Oxygen is for emergency use only. In some locations we may be able to rent extra Oxygen tanks (40L\*150bar; 6000L) at USD150 per bottle (price & availability vary depending on location) Just let us know in advance and we can help to arrange.

All White Manta cruises are recreational dive trips, we require our guests to avoid decompression dives and absolutely no solo diving is allowed.

Private Dive Guide USD150 / night (upon request & subject to availability)

### Side Mount Divers

Please do let us know in advance of boarding. You will be required to provide all relevant equipment including manifold, regulators & harness. If you wish to dive with a second tank, let us know in advance - additional tank rental charges location specific & subject to availability; contact us for details. Just a reminder that this is a Recreational Dive trip and that you must keep within our Trip Schedule (Max dive time/ Max depths). Follow Safe Diving Practices at ALL times plus No Deco Diving and No Solo Diving

### Camera Stations

Dive Deck; we have dedicated rinse tanks, dive deck shelves and charging area for all camera setups. In addition you will find dedicated camera room designed especially with the underwater photographer in mind.

### Flying after diving

Most White Manta diving schedules have the last dive latest midday on the penultimate day of the trip. This is designed to allow all divers to schedule an 18 hour minimum surface interval. However on the rare occasion that a diver may have an early flight departure we insist guests plan a minimum 18 hour surface interval

### Water Temperatures & Exposure suits

Water temperatures range from 25-28C through the region White Manta explores, even up to 29C at certain times of the year; 3mm shorty wetsuits provide adequate exposure protection for most. We have 3mm shorty wetsuits for rent but limited stock of full length wetsuits. All equipment is subject to availability. For those who get cold quickly underwater we advise you to bring your own exposure suit on all dive cruises.

### Paper work & Documentation

At the start of the trip guests are required to sign a liability release form and provide evidence of their certification, usually in the form of a recognised certification card and logbook - if unavailable, and they have a PADI certification- please verify by PADI Dive Check online. If Guests have been certified by another agency and do not have evidence of certification they should contact their certifying instructor/school and request confirmation documentation.

**Insurance;** Dive Insurance is compulsory on all our trips. We also **STRONGLY** advise you to have adequate travel insurance. Please check your travel insurance policy for your diving needs. If not covered then we recommend [DAN](#) (Divers Alert Network) or if you are resident in Asia Pacific then their [Asia Pacific Branch](#). Alternatively single trip insurance is available from [Dive Assure](#).

Please note our trips are not inclusive of any form of insurance. In case of trip disruption or cancellation due to unforeseen or circumstances beyond our control any compensation provided will be in the form of future trip credit only. Please do note we are unable to cover any flight / hotel expenses incurred & therefore strongly recommend all guests purchase adequate travel insurance. We strongly advise you to purchase a plan that includes Cancel For Any Reason (CFAR). Companies with such a CFAR option include; [D.A.N travel insurance](#), [April international](#), [CAT 70](#), [HTH Worldwide](#). Please check coverage details with your insurance provider carefully before purchasing.

# RAJA AMPAT

## Best times to visit

The best time to dive is November to April when less rain & much less wind; make conditions perfect for diving. You can expect Water Temps of 27-30 degrees Celsius throughout the park. The sheer amount of life found in these nutrient rich waters can effect visibility, expect between 10-30m vis.



**Raja Ampat** is all about diversity - not only diversity of species, but also of dive sites. There are some areas where soft corals and sea fans dominate, others with hard corals, seagrass beds, mangroves, shallow reefs, drop offs, caves, black sand and white sand...and there are more species of fish life here anywhere else in the world. Here, all the levels of the food chain are well represented - from pygmy seahorses to top predators, from manta ray to nudibranch, Raja Ampat has it all!

## White Manta December -May



**Raja Ampat** or 'Four Kings' is a true divers paradise, a wonderland lost in time, incredible natural beauty dominates above and below the blue waters; steep jungle covered



In the North / Central region of the park, distinctive dive sites include Cape Kri, for amazing pelagic action in swift currents, Mellissa's Garden, for stunning hard coral gardens, Blue Magic; an underwater pinnacle that attracts hunting pelagics & doubles as a Manta cleaning station, & Mangrove Ridge; a stunning coral reef where shallow, clear waters of the mangrove forest lead to an explosion of soft corals.

In the Southern region of the park around Misool a true diver's paradise can be discovered. Explore the caves & swim thrus of Farondi Goa, come face to face with giant Manta's at Magic Mountain and explore the current swept ridges of Boo Windows & Nudi Rock, where sharks, Napoleon wrasse & jacks gather & smaller macro delights such as pygmy seahorses & nudi's reward those with sharp eyes.



## TRITON BAY, WEST PAPUA



**Triton Bay, Kaimana Regency, West Papua;** Located at the heart of the Kaimana Marine Protected Area in West Papua, Triton Bay provides a stunning and unspoilt underwater environment and represents one of the final frontiers of diving in Indonesia. The region was only surveyed in 2006 and is still being explored today, meaning new dive sites are still being found every year. Divers who are keen to get off the beaten track & explore a more remote diving destination will be richly rewarded in Triton Bay, with it's unique underwater habitats, colourful soft corals, incredible endemic species and even the chance to swim with whale sharks.

Triton Bay really does feel like you are entering a time capsule from the past. The underwater landscape provides similarly impressive level of soft coral coverage as places like Misool while the marine life never fails to impress, with huge schools of untroubled trevallies & jacks, plenty of macro superstars, squadrons of Bumped parrotfish and ever-present turtles. Triton Bay's black coral forests are awesome in scale and never fail to impress, while above the water the landscape is also fascinating with lush green forests, stunning sunsets & sunrises, and a real sense that you are exploring a true wilderness. Not many Liveaboards visit this region and the sense of true exploration & privilege to visit this region is undeniable.

Triton Bay also provides the possibility of some encounters with larger underwater megastars. Along with a resident pod of pilot whales, the bay also features the chance to encounter whale sharks as they visit local fishing bagans in the early mornings, sometimes many individuals at one time. Triton Bay truly is a destination not to be missed.

**Water Temp:** between 26-29 degrees Celsius (Dec-May)  
22-26 degrees (Sept-Dec)

**Air Temp:** 28-35 degrees Celsius,

**Visibility:** 10-25m+

Please note, due to the unparalleled amount of marine life & nutrients in this location, visibility can be variable & as low as 5m depending on currents / upwelling. Average vis is 10-15m.

**Levels of Experience:** Intermediate to Advanced. Expect some strong currents on divesites in the Pantar Strait

**Best Time to Dive:** November-April

**What to See/ Highlights;** Amazing Macro; Frogfish, ghost pipefish, pygmy seahorse, wunderpuss and nudibranch galore. Endemic species such as the walking shark, flasher wrasse, dotty back, and sawfish. Larger fish; Bumphead parrotfish, Groupers, Fussiliers, Jacks, Whale Shark. Look out for resident pilot whales and dolphins from the surface.





# AMBON & THE BANDA SEA

Ring of Fire Crossing trips September/November

In-between our Sangalaki and Raja Ampat seasons The KM White Manta embarks upon once in a lifetime voyages across the Banda sea, visiting the famed 'Spice Islands' to discover diving Nirvana in the 'Ring of Fire.' This is diving as it was meant to be enjoyed, true exploration, away from the crowds, discovering dive sites that very few divers will get a chance to explore; discover unique and spectacular scenery both above and below the waves where volcanic activity has created a remote island paradise, only accessible to divers via live aboard. With our unmatched experience in this area, we can show you just what an incredible destination this is and take you to our 'Hammer head hot spots' where at certain times of the year (Sept-Nov) schools of more than 200 Hammerheads have been witnessed.

**Water Temp;** 27-29 degrees Celsius, Air Temp; 22-31 degrees Celsius Note; deep water thermoclines can reduce temps to as low as 25C

**Visibility;** Best in April when you can expect clear waters with visibility ranging between 20-30 meters. During Sep-Nov visibility can reduce significantly. Diver Level; intermediate to advanced. We highly recommend divers have at least 50 logged dives prior to their trip



Beyond providing some of the best diving in the region the islands also have had a long and fascinating history. Spices, foreign traders, colonial conflicts, wars and earthquakes have all featured heavily in their checkered past. Up until the middle of the 19th century this was the only place on Earth where the spices nutmeg and mace could be found and as a result they were crucial hub for the spice trade, for a taste of the historic atmosphere of this region we will often visit local villages & communities that still rely on these very spices for their day to day living.



The remoteness of these islands along with the low levels of human population, have meant less fishing and pollution pressures resulting in a vibrant, natural and healthy reef system. You can expect reefs bursting with life, huge sea fans and sponges, some monumental hard corals, and more fish than your mask can cope with, there is an extraordinary variety and volume of fish life, both in terms of large and small marine life.

# SANGALAKI KAKABAN & MARATUA

**New White Manta June - August**



**Discover** an untouched diving destination which offers everything you need for the ultimate dive safari. Located off the East Coast of Kalimantan (The Indonesian portion of Borneo) the Islands of Sangalaki, Maratua and Kakaban offer some of the most remote, uncrowded and untouched diving spots visited by the Manta fleet. Not only will you be diving away from the crowds but the diving is spectacular with plenty of 'Big Fish' sightings possible throughout the area.

**Sangalaki;** Good potential for manta rays who use the island's surrounding colourful reefs as a cleaning and breeding ground. a renowned turtle hatching site, every day hundreds of hatching sea turtles can be seen making their dash to the ocean from their nesting sites.

**Kakaban & Kakaban Lake;** Kakaban is famous for it's stunning fresh water Jelly Fish lake fringed by virgin Mangrove forest. On the seaward side of the island sheer drop offs and walls attract Huge schools of Trevally and Barracuda along with the possibility of Hammerhead, Grey Reef and Black Tip sharks.

**Maratua;** One of the most action filled destinations in the region, the walls that surround this island provide some great Big Fish dives, with massive schools of chevron barracuda, hunting trevally, thresher sharks and much much more!

Water Temp; 28-30 degrees Celsius, Air Temp; 28-30 degrees Celsius Visibility; 10-30 meters, Level; intermediate to advanced,

There is even a great chance to see **Whale Sharks** here. Whilst it is not guaranteed, dives searching for the whale sharks take place around fishing 'Bagans' (floating fishing platforms) and are located away from any reefs in the open sea. It is a risk worth taking in our opinion, mostly they are there and, well, they are the biggest fish so very very popular!





## Crossing trips Raja Ampat - Halmahera - Manado April / May &amp; August / September

**Discover** breathtaking scenery both above and below, these trips take in some of the most remote and exclusive destinations visited by the Manta fleet. Volcanos, flora, fauna, deserted beaches, mangroves, and exotic birds will provide an incredible back drop top side whilst below the waves is equally jaw dropping with underwater volcanic landscapes rich in nutrients & bio-diversity both large & small. Dolphins, whales, tuna, & more often seen amongst the hive of activity. Also on the agenda, some of the worlds best critter & muck diving to satisfy even the most demanding underwater photographers!

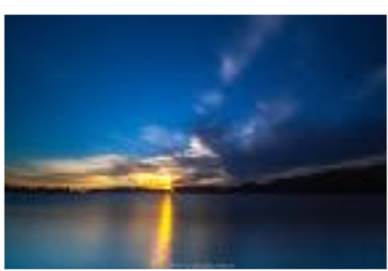
**Water Temp;** 27-30 degrees Celsius, **Air Temp;** 27-32 degrees Celsius, **Visibility;** 15-30 meters, **Currents;** medium to strong, **Level;** intermediate to advanced,

**Sample Diving destinations;**

**Pulau Pisang;** Steep reef slopes carpeted in multi coloured soft corals and beautiful hard coral gardens. Big schools of Dogtooth Tuna and Spanish Mackerel.

**Halmahera;** Indonesia's next world class scuba diving destination. Pristine beauty, both above the water and below the water, discover an amazing group of islands with huge biodiversity, diverse, unspoiled and uncrowded dive sites.

**Pulau Ternate & Pulau Tidore;** Stunning Volcanic islands; Tunas, GT's, larges schools of jacks, black snappers, barracudas. common encounters with white tips and black tips, massive schools of Black and Midnight Snappers, another highlight at the nearby Tifore sea mount is an immense school of Barracuda and Big Eye Jacks - some of the biggest our dive guides have ever encountered.



White Manta Diving



Located between Raja Ampat & Eastern Kalimantan the Molucca Sea & Halmahera region offers divers the opportunity to embark on some true world class diving. KM Raja Manta offers safaris that cross the Molucca Sea from Sorong to Manado as well as cruises departing and returning to Manado to the remote & largely unexplored Bangka & Sangihe islands. These trips will thrill even the most experienced of divers. Take this once in a life time opportunity to explore remote volcanic islands with uncrowded and rarely visited divesites, amazing scenery both above and below the water, pelagic action in stunning visibility and some of the world's best muck diving for lovers of weird & wonderful critters, all within the heart of the coral triangle.





# WHITE MANTA

## Other services & fees



Item	All Prices in USD
Marine Park & Harbour Fees Celebes Sea	250-300
Marine Park & Harbour Fees Raja Ampat	250
Triton Bay	200
Marine Park & Harbour Fees Raja Ampat & Triton Bay crossings	320
Marine Park & Harbour Fees Banda Sea	250
Enriched Air Nitrox	20/day or 7/fill
Massage/Hour	40
Soft Drinks	FOC
Beer	4
Wine*subject to availability	30-50
Nespresso Coffee	3
White Manta T-shirt	12
Log Books	3
24 Hr Satellite Wifi Service	USD35 per person / 10GB card

All prices subject to change, please check individual trip itinerary for details.

## NEW WHITE MANTA SAFETY

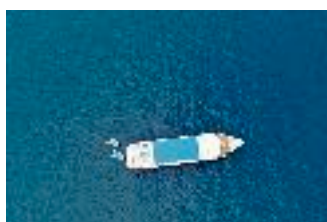
We do not take risks or compromise on the safety and diving of our guests and crew. In addition to twin engines, the White Manta is fitted with the following security and safety features:

- All cabins are with speakers, fire and smoke alarms.
- All sound proof wall panel, indoor deck are made of fire retardant materials
- Furuno Radar, GPS plotter, Echo Sounders, Auto pilot, AIS
- SSB radio, VHF radio, SART, EPIRB
- Standard Fire Fighting Equipment
- 3 x 30 Life Rafts
- Life Jackets in all cabins
- 4 x tender boats
- 2 x Anchor System (DC/AC)
- First Aid & Oxygen Kit
- Fire Extinguishers
- Satellite Telephone & Wi-Fi
- Night Watch Security

### Fire Safety

In the unlikely event of a fire, please be reassured we have the following security and safety features in place;

- All cabins are with speakers, fire and smoke alarms.
- Fire extinguishers can be found throughout, and clearly labelled Exit signs in case of fire/ vessel evacuation.
- Emergency Action Plan provided with Safety Briefing
- Lower deck has 2-way fire escape hatch, located at front (via crew cabin leading to anchor bow area, main deck) & rear (via engine room leading dive & main deck). All guests staying in Lower deck cabins shown these emergency exits.
- Night security from 10pm-5am inside engine room and outside on Main deck.



2025 Schedules & Prices / New White Manta, Indonesia											
Trip Code	Depart Date		Return Date		Duration	Dives	Destination	Start	Finsh	14x En-suite Cabins	
										Upper & Main deck	Lower deck
										double or twin share per diver	
2025									All prices in American Dollars USD		
WMRA251	7-Jan	Tue	13-Jan	Mon	7D6N	18	Raja Ampat	Sorong	Sorong	\$3,000	\$2,800
WMRATRI	15-Jan	Wed	24-Jan	Fri	10D9N	26	Misol-Fak Fak-Triton Bay	Sorong	Kaimana	\$4,800	\$4,500
WMCNY25	26-Jan	Sun	2-Feb	Sun	8D7N	20	Triton Bay	Kaimana	Kaimana	\$3,500	\$3,300
WMTRIRA	4-Feb	Tue	17-Feb	Mon	14D13N	36	Triton Bay-Fak Fak-Raja Ampat	Kaimana	Sorong	\$6,500	\$6,000
WMRA252	20-Feb	Thu	27-Feb	Thu	8D7N	22	Raja Ampat & Misool	Sorong	Sorong	\$3,600	\$3,300
WMRA253	1-Mar	Sat	8-Mar	Sat	8D7N	22	Raja Ampat & Misool	Sorong	Sorong	\$3,600	\$3,300
WMRA254	10-Mar	Mon	17-Mar	Mon	8D7N	22	Raja Ampat & Misool	Sorong	Sorong	\$3,600	\$3,300
WMR2541	19-Mar	Wed	27-Mar	Thu	9D7N	26	Raja Ampat & Misool	Sorong	Sorong	\$4,050	\$3,750
WMR2542	29-Mar	Sat	6-Apr	Sun	9D8N	26	Raja Ampat & Misool	Sorong	Sorong	\$4,050	\$3,750
WMRA255	8-Apr	Tue	15-Apr	Tue	8D7N	22	Raja Ampat & Misool	Sorong	Sorong	\$3,600	\$3,300
WMRAMD	17-Apr	Thu	27-Apr	Sun	11D10N	28	Raja Ampat-Halmahera-Lembeh	Sorong	Manado	\$4,500	\$4,200
WMMDHEM	30-Apr	Wed	7-May	Wed	8D7N	20	Lembeh-Halmahera-Lembeh	Manado	Manado	\$3,500	\$3,200
WMMDSAG	10-May	Sat	19-May	Mon	10D9N	26	Manado-Maratua-Kakaban-Sangalaki	Manado	Berau	\$4,250	\$3,850
WMSAGA1	21-May	Wed	28-May	Wed	8D7N	22	Sangalaki-Kakaban-Maratua	Berau	Berau	\$3,200	\$2,900
WMSAMD	30-May	Fri	8-Jun	Sun	10D9N	26	Sangalaki-Kakaban-Maratua-Manado	Berau	Manado	\$4,250	\$3,850
WMTOGIA	10-Jun	Tue	21-Jun	Sat	12D11N	30	Lembeh-Gorontalo-Togian	Manado	Luwuk	\$4,600	\$4,300
WMTOG2	23-Jun	Mon	3-Jul	Thu	11D10N	28	Togian-Gorontalo-Manado	Luwuk	Manado	\$4,600	\$4,300
WMHALM2	5-Jul	Sat	14-Jul	Mon	10D9N	26	Lembeh-Halmahera Exploration	Manado	Ternate	\$4,300	\$4,000
WMHALM3	16-Jul	Wed	25-Jul	Wed	10D9N	26	Halmahera Exploration	Ternate	Ternate	\$4,300	\$4,000
WMHALM5	27-Jul	Sun	3-Aug	Sun	8D7N	20	Halmahera Exploration	Ternate	Ternate	\$3,500	\$3,200
WMHALRA	5-Aug	Tue	14-Aug	Thu	10D9N	26	Halmahera - Raja Ampat	Ternate	Sorong	\$4,500	\$4,200
WM DOCK	14-Aug	Thu	24-Aug	Sun	11D10N	-	Dry Dock	Sorong	Sorong	-	-
WMABA1	1-Sep	Mon	9-Sep	Tue	9D8N	22	Ambon-Banda-Ambon	Ambon	Ambon	\$4,400	\$4,200
WMABA2	12-Sep	Fri	22-Sep	Mon	11D10N	28	Ambon-Banda-Ambon	Ambon	Ambon	\$5,500	\$5,200
WMABA3	24-Sep	Wed	1-Oct	Wed	8D7N	18	Ambon-Banda-Ambon	Ambon	Ambon	\$3,800	\$3,500
WMABA4	3-Oct	Fri	11-Oct	Sat	9D8N	22	Ambon-Banda-Ambon	Ambon	Ambon	\$4,300	\$4,000
WMABA5	13-Oct	Mon	23-Oct	Thu	11D10N	28	Ambon-Banda-Ambon	Ambon	Ambon	\$5,500	\$5,200
WMABA6	25-Oct	Sat	1-Nov	Sat	8D7N	18	Ambon-Banda-Ambon	Ambon	Ambon	\$3,800	\$3,500
WMABA7	3-Nov	Mon	10-Nov	Mon	8D7N	18	Ambon-Banda-Ambon	Ambon	Ambon	\$3,800	\$3,500
WMABA8	12-Nov	Wed	19-Nov	Wed	8D7N	18	Ambon-Banda-Ambon	Ambon	Ambon	\$3,800	\$3,500
WMAMRA	21-Nov	Fri	1-Dec	Mon	11D10N	28	Ambon-Banda- Raja Ampat	Ambon	Sorong	\$5,500	\$5,200
WMRA256	3-Dec	Wed	10-Dec	Wed	8D7N	22	Raja Ampat & Misool	Sorong	Sorong	\$3,600	\$3,300
WMRA257	12-Dec	Fri	19-Dec	Fri	8D7N	22	Raja Ampat & Misool	Sorong	Sorong	\$3,600	\$3,300
WMXMS25	21-Dec	Sun	28-Dec	Sun	8D7N	22	Raja Ampat & Misool	Sorong	Sorong	\$3,700	\$3,400
WMNEW26	30-Dec	Tue	7-Jan	Wed	9D8N	26	Raja Ampat & Misool	Sorong	Sorong	\$4,200	\$3,900



2026 Schedules & Prices / New White Manta, Indonesia											
Trip Code	Depart Date		Return Date		Duration	Dives	Destination	Start	Finish	14x En-suite Cabins	
										Upper & Main deck	Lower deck
	2026									All prices in American Dollars USD	
WMRA260	10-Jan	Sat	18-Jan	Sun	9D8N	26	Raja Ampat-Misool	Sorong	Sorong	\$4,050	\$3,750
WMRA261	20-Jan	Tue	29-Jan	Thu	10D9N	30	Raja Ampat-Misool	Sorong	Sorong	\$4,500	\$4,200
WMRATR1	1-Feb	Sun	12-Feb	Thu	12D11N	30	Misool-Fak Fak-Triton Bay	Sorong	Kaimana	\$5,950	\$5,650
WMCNY26	15-Feb	Sun	22-Feb	Sun	8D7N	20	Triton Bay	Kaimana	Kaimana	\$3,700	\$3,400
WMTRRA1	24-Feb	Tue	6-Mar	Fri	11D10N	28	Triton Bay-Fak Fak-Misool	Kaimana	Sorong	\$5,500	\$5,200
WMRATR2	9-Mar	Mon	19-Mar	Thu	11D10N	28	Misool-Fak Fak-Triton Bay	Sorong	Kaimana	\$5,500	\$5,200
WMTRRA2	22-Mar	Sun	1-Apr	Wed	11D10N	28	Triton Bay-Fak Fak-Raja Ampat	Kaimana	Sorong	\$5,500	\$5,200
WMRA262	3-Apr	Fri	10-Apr	Fri	8D7N	22	Raja Ampat-Misool	Sorong	Sorong	\$3,600	\$3,300
WMRA263	12-Apr	Sun	19-Apr	Sun	8D7N	22	Raja Ampat-Misool	Sorong	Sorong	\$3,600	\$3,300
WMRAMD1	21-Apr	Tue	2-May	Sat	12D11N	30	Raja Ampat-Halmahera-Lembeh	Sorong	Manado	\$5,500	\$5,200
WMDMDEM	5-May	Tue	12-May	Tue	8D7N	20	Lembeh-Halmahera-Lembeh	Manado	Manado	\$3,500	\$3,200
WMTOG1	14-May	Thu	24-May	Sun	11D10N	28	Lembeh-Gorontalo-Togian	Manado	Luwuk	\$4,600	\$4,300
WMTOG2	26-May	Tue	5-Jun	Fri	11D10N	28	Togian-Gorontalo-Manado	Luwuk	Manado	\$4,600	\$4,300
WMDMHRA	7-Jun	Sun	17-Jun	Wed	11D10N	28	Lembeh-Halmahera-Raja Ampat	Manado	Sorong	\$5,500	\$5,200
WMRAHMD	20-Jun	Sat	30-Jun	Tue	11D10N	28	Raja Ampat-Halmahera-Lembeh	Sorong	Manado	\$5,500	\$5,200
WMHALM1	3-Jul	Fri	12-Jul	Sat	10D9N	26	Lembeh-Halmahera	Manado	Ternate	\$4,300	\$4,100
WMHALM2	14-Jul	Tue	21-Jul	Tue	8D7N	20	Halmahera Exploration	Ternate	Ternate	\$3,500	\$3,300
WMHALM3	23-Jul	Thu	30-Jul	Thu	8D7N	20	Halmahera Exploration	Ternate	Ternate	\$3,500	\$3,300
WMHALRA	1-Aug	Sat	10-Aug	Mon	10D9N	26	Halmahera-Raja Ampat	Ternate	Sorong	\$4,900	\$4,700
WM DOCK	10-Aug	Mon	28-Aug	Fri	19D18N	-	Dry Dock	Sorong	Sorong	-	-
WMBA261	2-Sep	Wed	9-Sep	Wed	8D7N	18	Ambon-Banda-Ambon	Ambon	Ambon	\$3,900	\$3,700
WMBA262	11-Sep	Fri	18-Sep	Fri	8D7N	18	Ambon-Banda-Ambon	Ambon	Ambon	\$3,900	\$3,700
WMBA263	20-Sep	Sun	27-Sep	Sun	8D7N	18	Ambon-Banda-Ambon	Ambon	Ambon	\$3,900	\$3,700
WMBA264	29-Sep	Tue	7-Oct	Wed	9D8N	22	Ambon-Banda-Ambon	Ambon	Ambon	\$4,400	\$4,200
WMBA265	9-Oct	Fri	16-Oct	Fri	8D7N	18	Ambon-Banda-Ambon	Ambon	Ambon	\$3,900	\$3,700
WMB2651	18-Oct	Sun	26-Oct	Mon	9D8N	22	Ambon-Banda-Ambon	Ambon	Ambon	\$4,400	\$4,200
WMBA266	29-Oct	Thu	9-Nov	Mon	12D11N	22	Ambon-Banda-Raja Ampat	Ambon	Sorong	\$6,000	\$5,700
WMRA264	11-Nov	Wed	18-Nov	Wed	8D7N	22	Raja Ampat-Misool	Sorong	Sorong	\$3,700	\$3,500
WMRA265	20-Nov	Fri	27-Nov	Fri	8D7N	22	Raja Ampat-Misool	Sorong	Sorong	\$3,700	\$3,500
WMRA266	29-Nov	Sun	6-Dec	Sun	8D7N	22	Raja Ampat-Misool	Sorong	Sorong	\$3,700	\$3,500
WMRA267	8-Dec	Tue	17-Dec	Thu	10D9N	30	Raja Ampat-Misool	Sorong	Sorong	\$4,700	\$4,500
WMXMS26	19-Dec	Sat	27-Dec	Sun	9D8N	26	Raja Ampat-Misool	Sorong	Sorong	\$4,400	\$4,200
WMNEW27	29-Dec	Tue	5-Jan	Tue	8D7N	22	Raja Ampat-Misool	Sorong	Sorong	\$3,900	\$3,700

# NEW WHITE MANTA 2027 SCHEDULES COMING SOON

Note; New White Manta schedules are subject to change, these schedules are correct as of Jan 2024. Please confirm your trip's start & finish dates , trip length & destination before booking.

# WHITE MANTA CHARTERS

New White Manta Full Charters available for minimum 22 pax  
19 pay paying full trip price based on Main & Upper Deck Plus 3 pax Free of Charge  
13 Cabins (Ensuite Double & Twin Shares) will be made available to allocate to your charter group  
For additional pax simply add retail trip price per pax (subject to availability)

## WHITE MANTA GROUPS

For smaller groups who may not be able to fill the whole boat but would like to book together please find the following Group FOC details & conditions (below).

- 6 paying plus 1 FOC (minimum 7 pax)
- 12 paying plus 2 FOC (minimum 14 pax)
- FOC: Free Of Charge

Conditions;

- Offer applies for trips on our New White Manta trips from Indonesia.
- Will not be applied to any pre-existing bookings, conditions available to new single bookings only (not accumulation of)
- Subject to Availability; maximum FOC spaces on any non charter trip 2 pax (2022) and 3 pax 2023+. First group bookings on any trip receives FOC spaces, subsequent group bookings FOC may not be applicable. First come, First served
- FOC based on Lower deck cabin accommodation

## WHITE MANTA SINGLE OCCUPANCY

Single Occupancy rates;

- 20% in addition to original Trip price.
- For WM trips, Single Occupancy cabins are limited to Main & Lower decks ONLY
- Single spaces are subject to availability & offered on a first come, first served basis.







